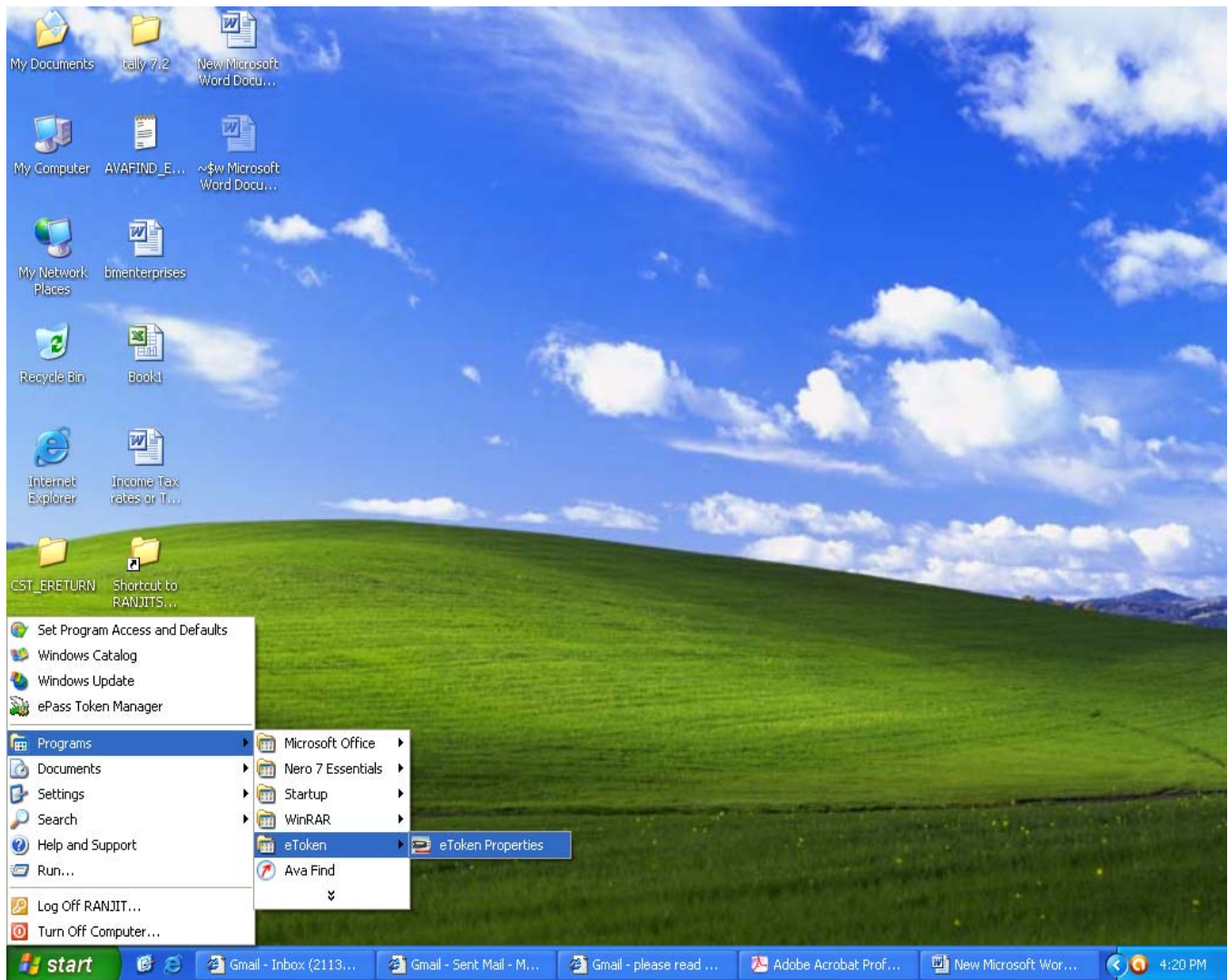
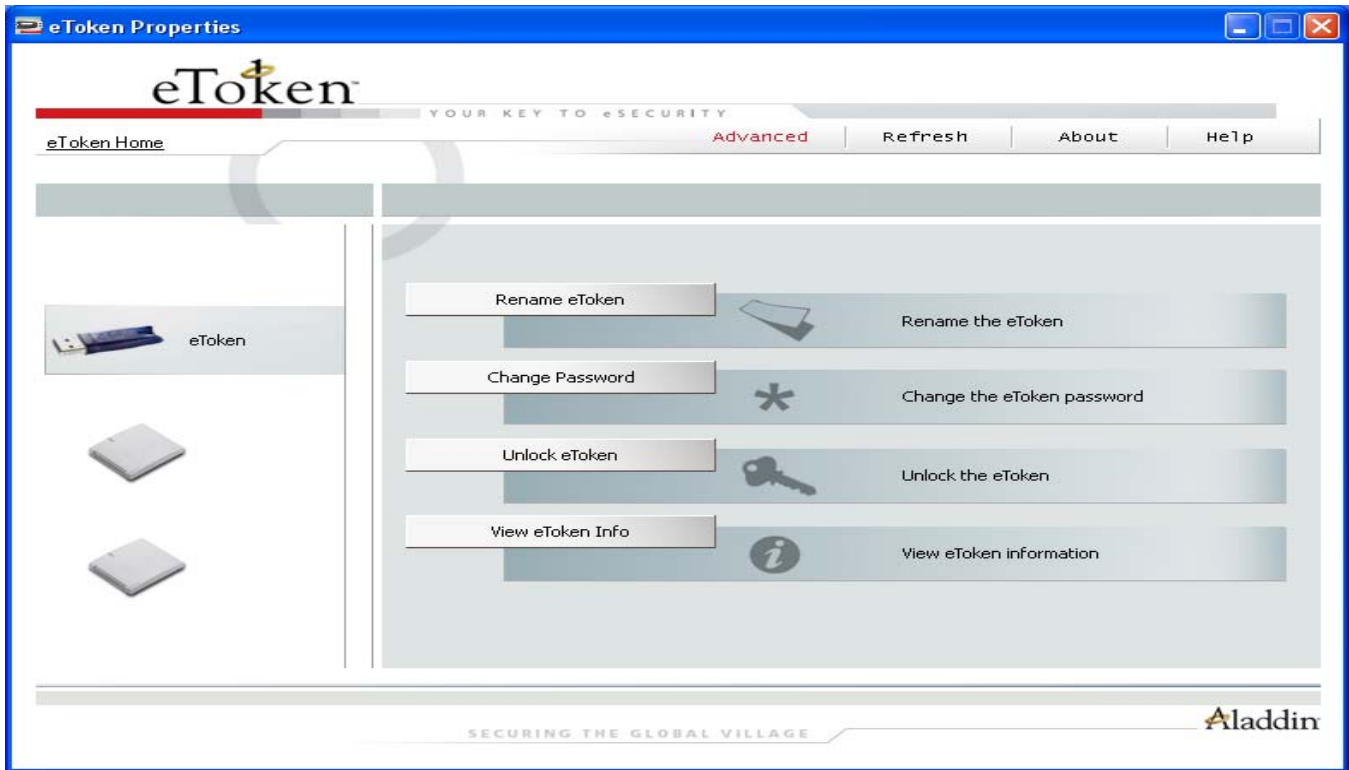


# How to import certificate which is in PFX format in E-Token

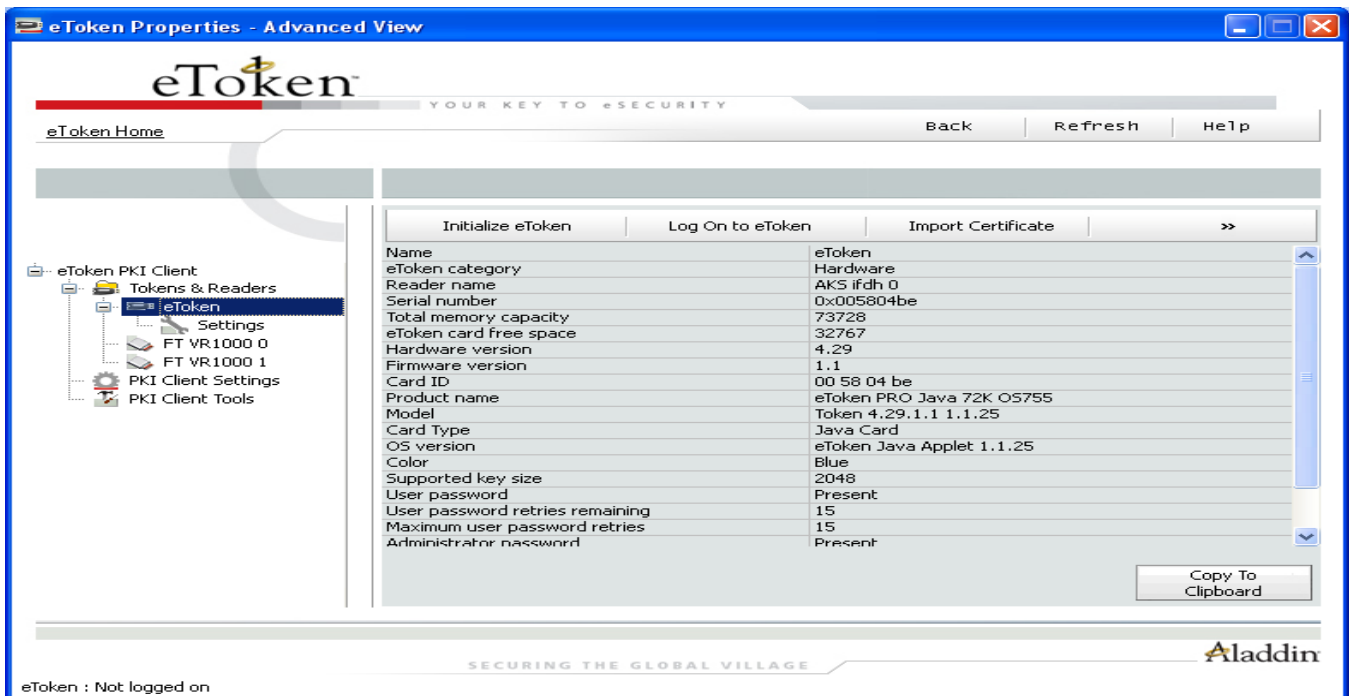
1. Install the driver for the Etoken in which certificate is to be installed
2. Click on Start in Windows → Program→eToken →eToken Properties



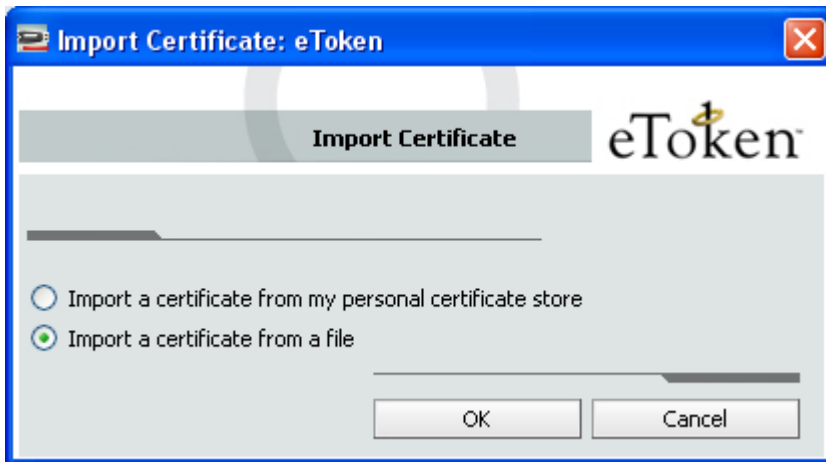
### 3. Click on Advance



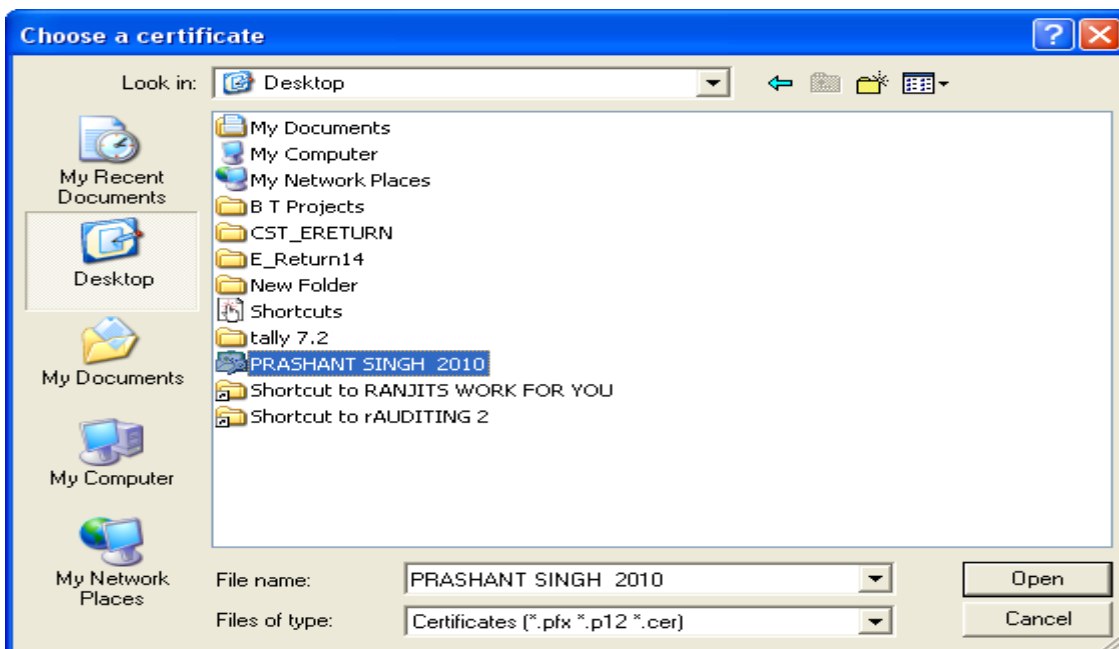
### 4. Select the eToken & Import Certificate



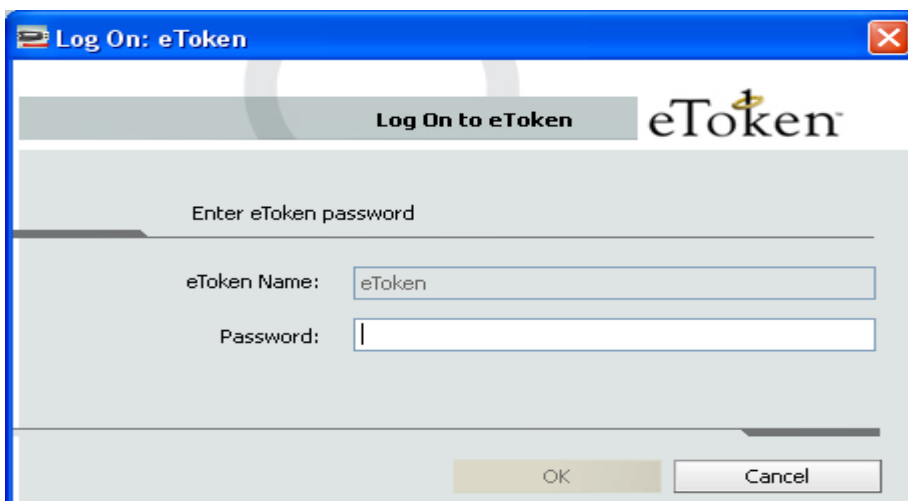
5. Click on OK



6. Select the Digital Signature. Click on Open.



7. Put on E-Token password.



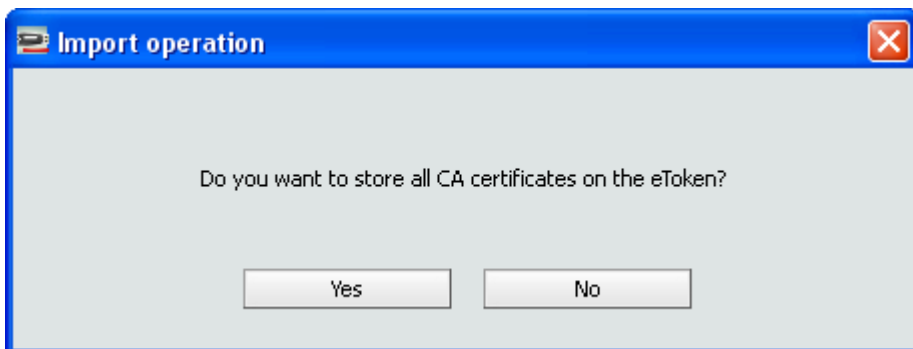
8. Put on E-Token Password and Click on OK.



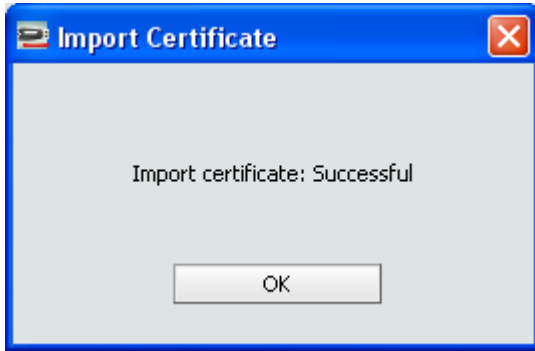
9. Put on Digital Signature Password & Click on OK.



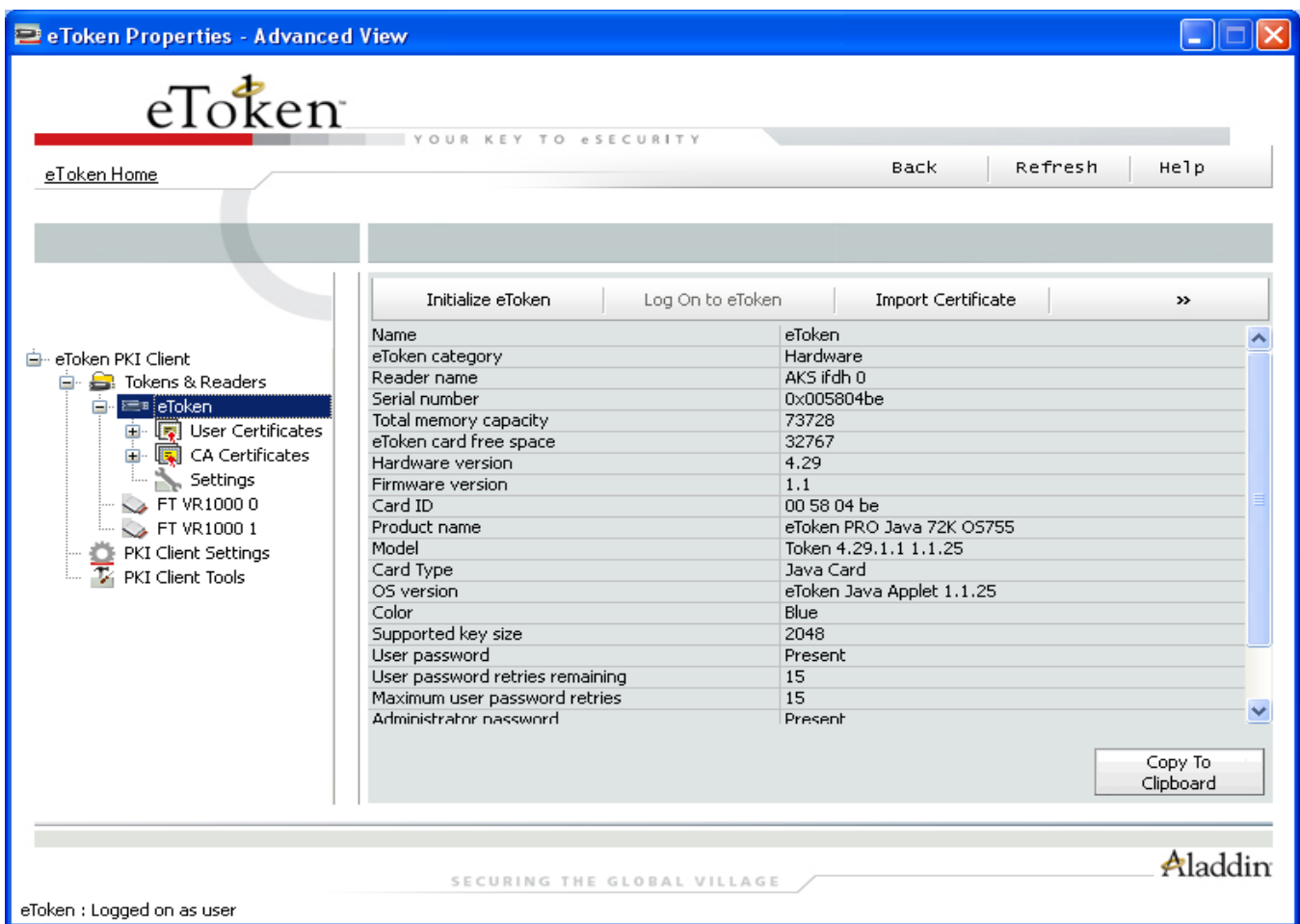
10. Click on Yes Button.



11. Click on OK.



12. Import was Successful



### 13. Click on User Certificate to see the Signature Name

The screenshot shows the 'eToken Properties - Advanced View' window. The title bar includes the text 'eToken Properties - Advanced View' and standard window control buttons. The main interface features the 'eToken' logo and the tagline 'YOUR KEY TO eSECURITY'. A navigation bar at the top contains 'eToken Home', 'Back', 'Refresh', and 'Help' buttons. On the left, a tree view shows the 'eToken PKI Client' structure with 'User Certificates' selected. The main area displays an 'Import Certificate' button and a table of certificates.

Issued To	Issued By	Expiry Date	Purposes
PRASHANT SINGH	e-Mudhra Class 3 Plati...	07/24/2012	Secure Email, Client Authentication

At the bottom of the window, the text '1 User Certificates' is visible on the left, and the Aladdin logo with the tagline 'SECURING THE GLOBAL VILLAGE' is on the right.