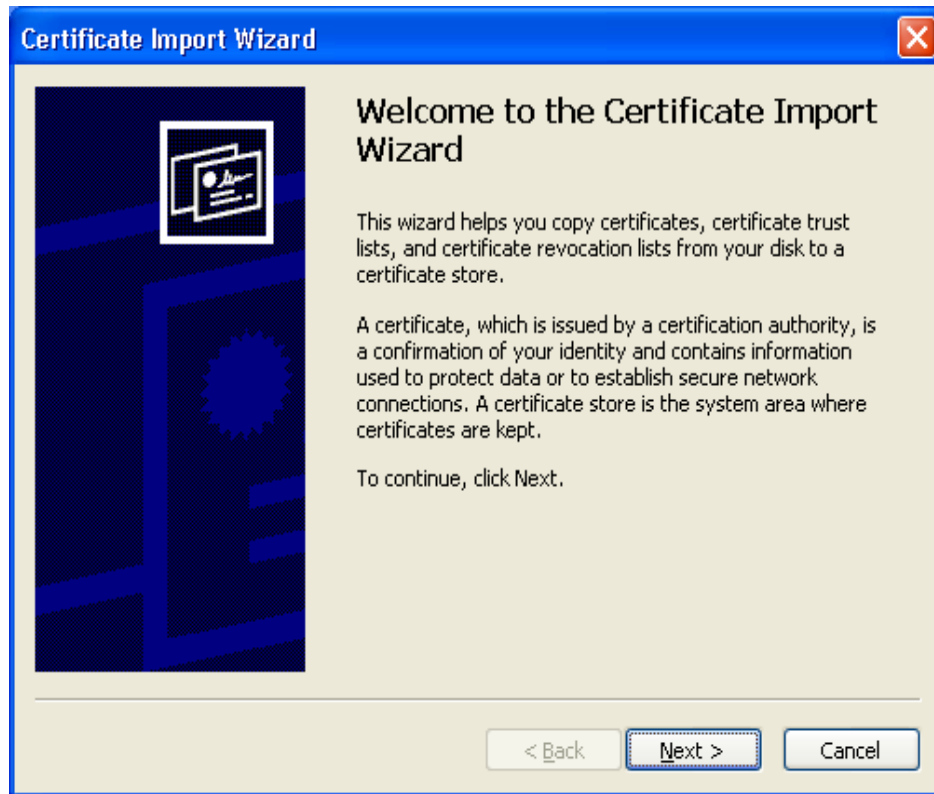


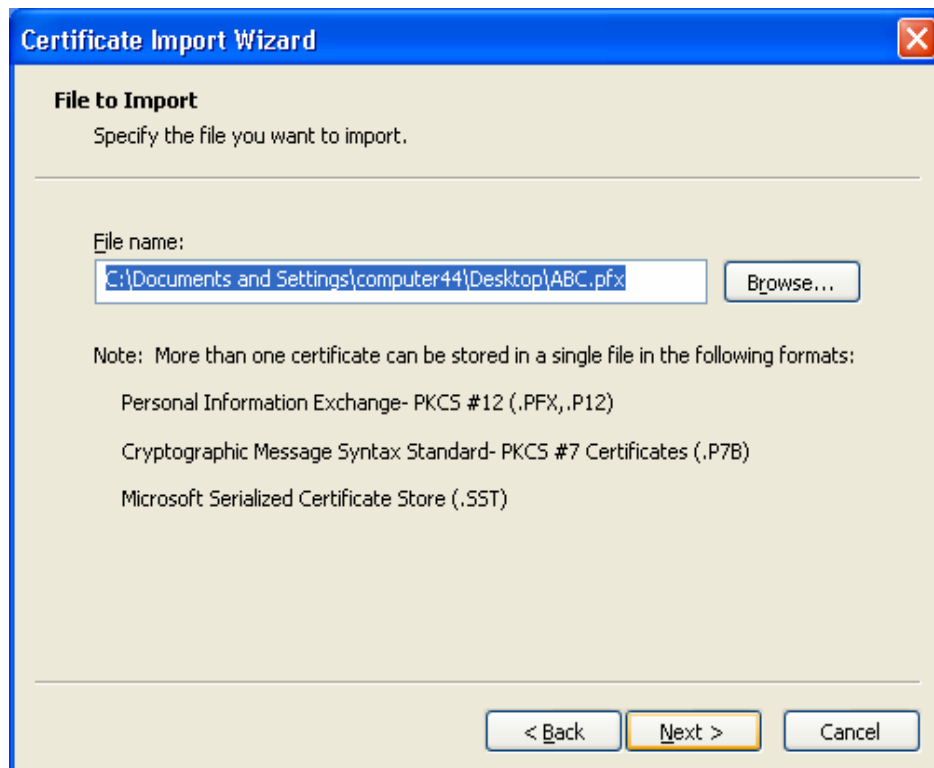
## Procedure to import Digital Certificate from your PC to Internet Explorer

Import the certificate From Desktop or stored in other devices other than USB Token

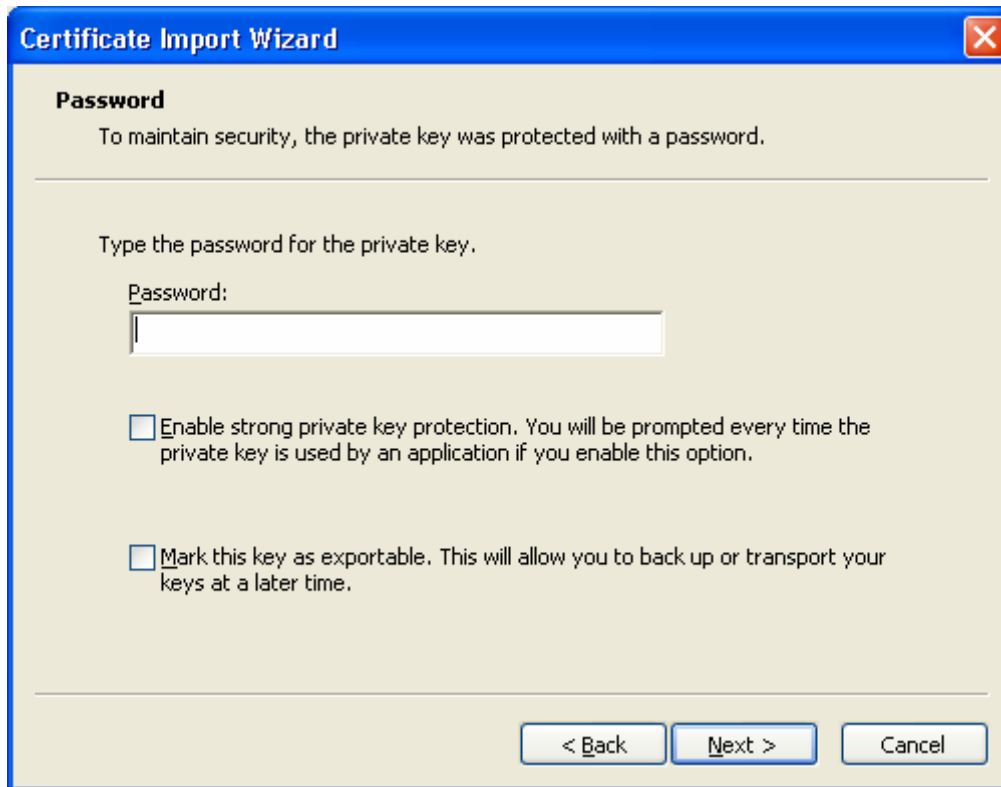
Step 1: Right click the certificate file and select 'Install PFX'. You will get the following Certificate Import Wizard



Step 2: Click on the Next Button. You will get the following Certificate Import Wizard.



**Step 2: Again** Click on the Next Button. You will get the following Certificate Import Wizard.



**Certificate Import Wizard**

**Password**

To maintain security, the private key was protected with a password.

---

Type the password for the private key.

Password:

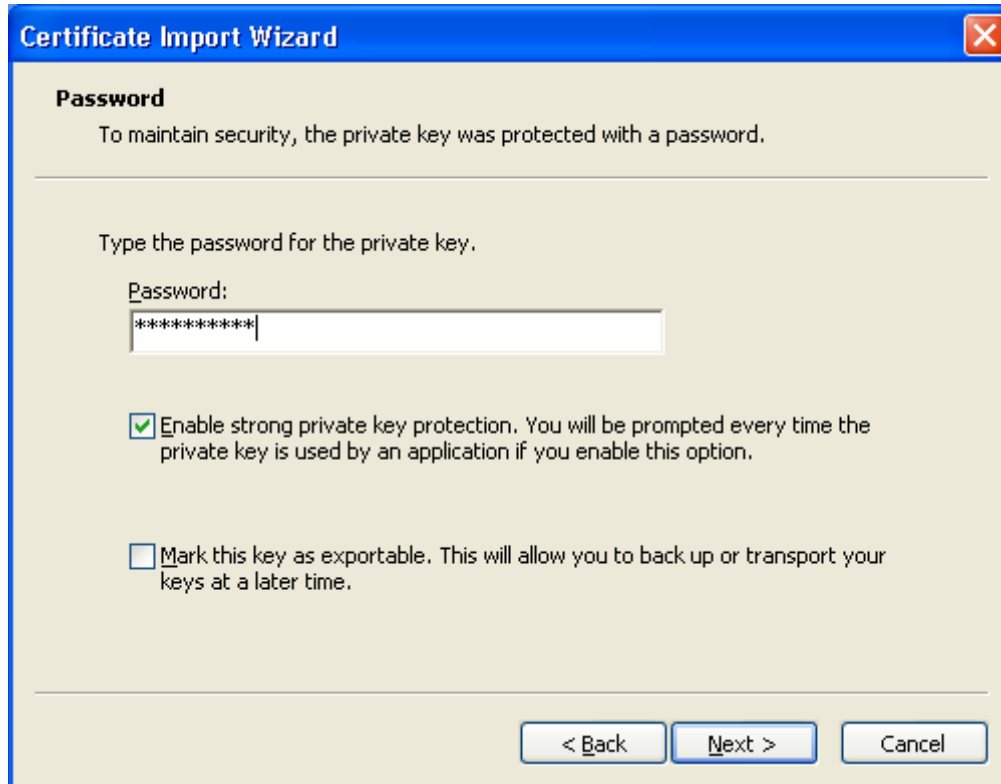
  
 Enable strong private key protection. You will be prompted every time the private key is used by an application if you enable this option.

Mark this key as exportable. This will allow you to back up or transport your keys at a later time.

---

< Back    Next >    Cancel

4. Enter the Password and check the box Enable Strong Private Key Protection and click on Next Button.



**Certificate Import Wizard**

**Password**

To maintain security, the private key was protected with a password.

---

Type the password for the private key.

Password:

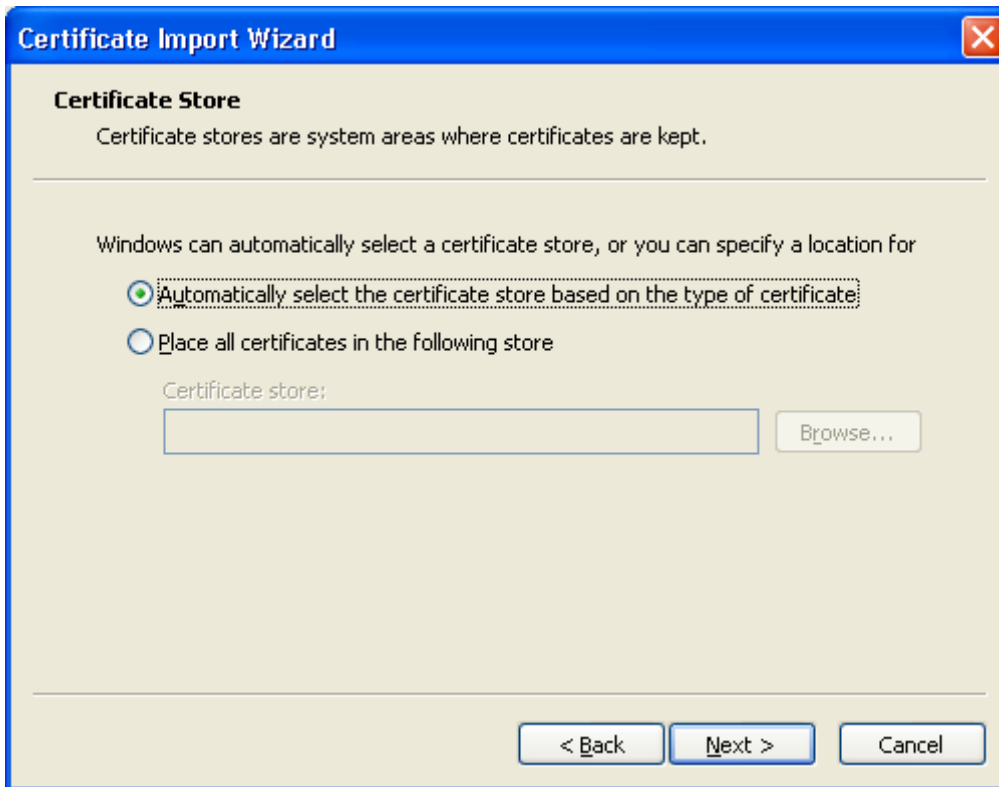
  
 Enable strong private key protection. You will be prompted every time the private key is used by an application if you enable this option.

Mark this key as exportable. This will allow you to back up or transport your keys at a later time.

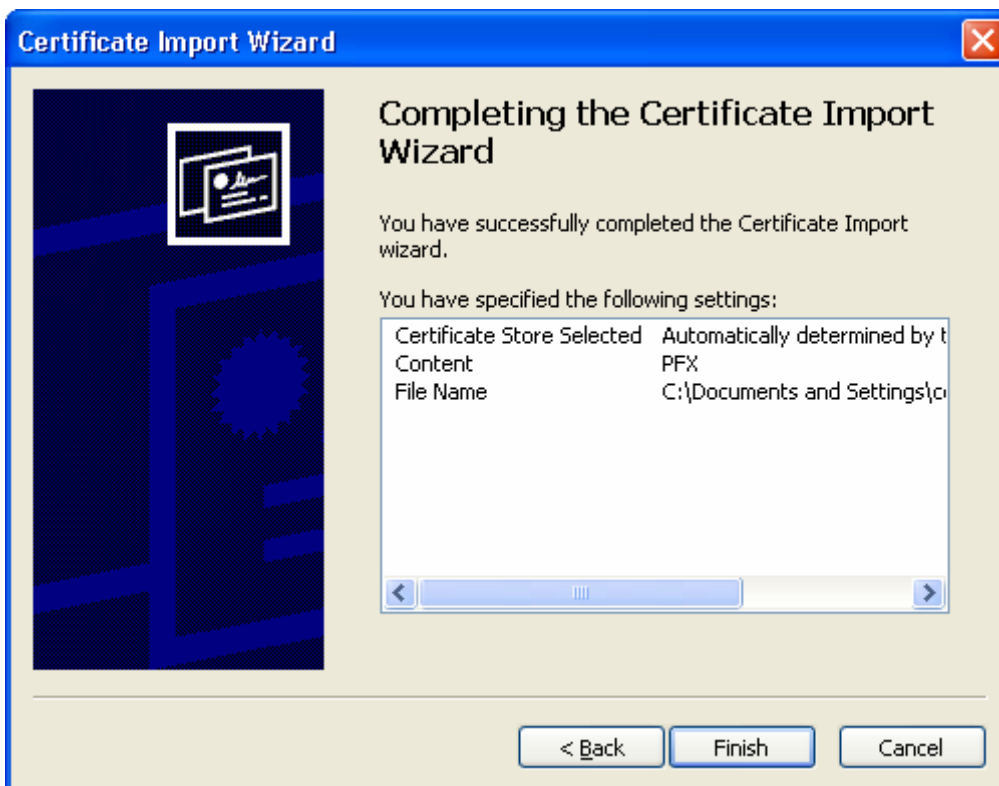
---

< Back    Next >    Cancel

**Step 5** : Keep the default option (the first one) and click next.



**Step: 6** Click Finish.



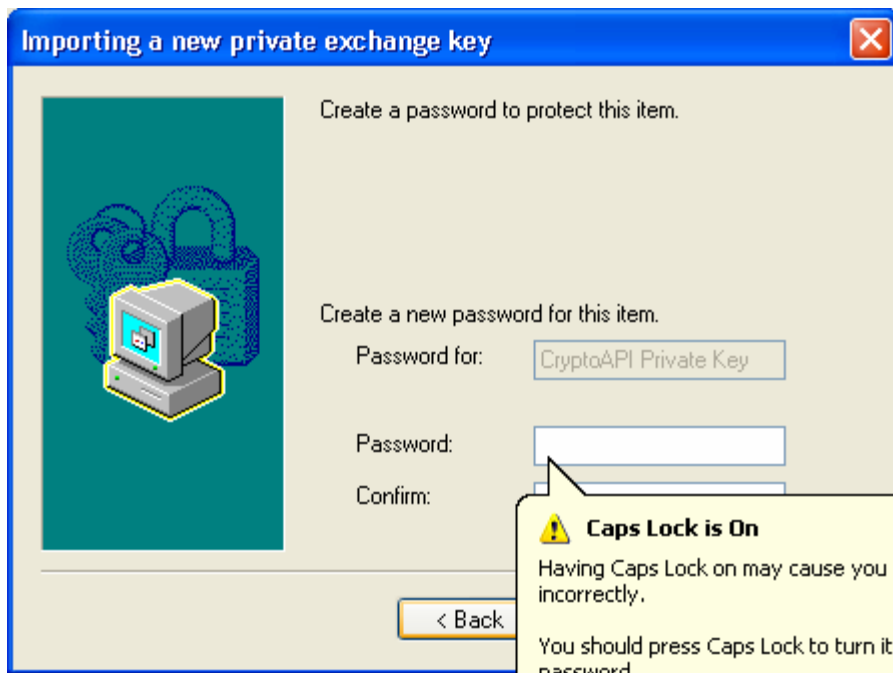
Step 7 : Click Security Level.



Step 8: Select High and then next.



**Step 9: Enter the password which you want to keep for using digital signature from your computer and click next.**



**Step: 10 You will get the following message.**

